



**GARANT**   
Service

MAINTENANCE & REPAIR SOLUTIONS  
FOR MARITIME, OFFSHORE &  
INLAND INDUSTRIES

80%

of all the projects are carried out  
outside the Baltic Sea region

~300

employees and  
specialists

1600

ships served  
annually

4500

projects  
worldwide

5000

m<sup>2</sup> of warehouse  
and workshop facilities

8M

EUR value of various  
goods in stock



## HISTORY AND EXPERIENCE

Based in one of the biggest ports in the Baltic States, GARANT SERVICE company is a part of GARANT GROUP international holding. Ship Repair & Maintenance was the first division to mark the beginning of GARANT company in 1990.

Founded in Lithuania more than 30 years ago, we have a deep understanding of the niche we serve. For all these years, we have been carrying out complete overhaul and maintenance services of diesel engines, mechanical machines, and other equipment. The long-term expertise enables us to serve marine, oil & gas, and land-based industries.

You can expect quick response time, proficient project management and technological solutions. The flexible approach allows us to carry out services on-site or on the vessel during the voyage. Wherever your ship or project is located, our riding squads are close at hand with the necessary equipment and readiness to assist.

The performed works maintain general liability insurance of 1 000 000 EUR, confirming our extensive experience and quality.



# ENGINE REPAIR & SPARE PARTS

Mobile engineer and specialist teams are selected to meet your demands and the nature of repairs. The shipment of special tools is arranged to support high quality and effective workflow.

With a wide net of spare parts producers and spare holders, we can provide needed spares for vessels and large shipyards' projects.

## **Solid expertise in marine diesel engine troubleshooting, repair, overhaul and maintenance:**

- 2-stroke main engines
- 4-stroke main & auxiliary engines
- Crankshaft replacements

## **Related services:**

- Complete replacement of main and auxiliary engines including installation of new foundations
- Turbocharger overhauls
- High pressure fuel pump & injector repair
- Honing of cylinder liners in workshop and onboard
- Reconditioning of cylinder heads, connecting rods, piston crowns, valve spindles and other engine components
- Restoring of bores inline or to nominal size in a workshop or in situ
- Preparation and overhaul of cylinder units in workshop



#### **List of serviced engine makers:**

- YANMAR
- HYUNDAI
- VOLVO PENTA
- MAN
- CAT
- MAK
- STX
- WÄRTSILÄ
- MTU
- DAIHATSU
- CUMMINS
- SULZER
- DETROIT DIESEL
- ROLLS ROYCE
- SCANIA
- WICHMANN
- GUASCOR
- BERGEN

#### **Other competences:**

- Engine parts
- Pumps and related items – DESMI, IMO, FLYGT, ALFA LAVAL
- Turbo chargers: ABB, KBB, MET, NAPIER, MAN
- Compressors
- Heat exchangers
- Separators
- Air starters



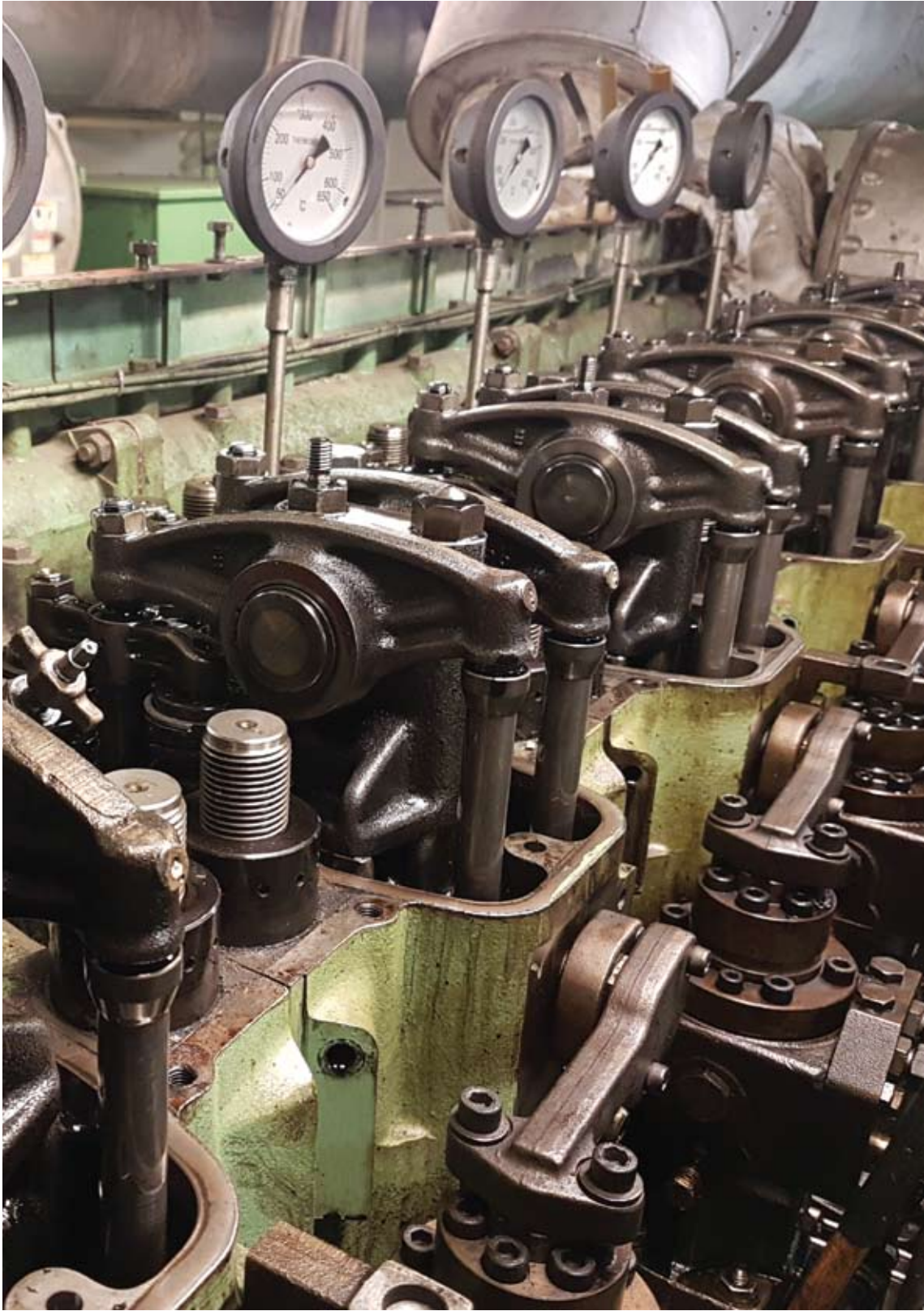


## YOUR YANMAR EXPERT

Since 2015, GARANT SERVICE is an official representative of YANMAR diesel engines and distributor of their spare parts. Our service engineers are specially trained to ensure the reliability of your engines.

### **Specific knowledge and skills allow us to serve your YANMAR engines with:**

- Experienced Technologist
- Flying teams of certified service engineers
- Fast mobilization
- New engine supply
- Individually selected & issued spare parts' lists based on the engine condition
- Reconditioning and reconditioned parts supply
- Spare parts supply worldwide from the warehouses in Europe and Japan
- Flexible delivery options:
  - › Super EXPRESS – dispatch within 1 working day
  - › Weekly – dispatch within 5 working days
  - › Monthly – dispatch within 30 days



# FLEET SERVICE AGREEMENT

Planning maintenance services beforehand secures vessel managers from unexpected expenses, saves resources, and maintains the value of the entire fleet at a desirable level.

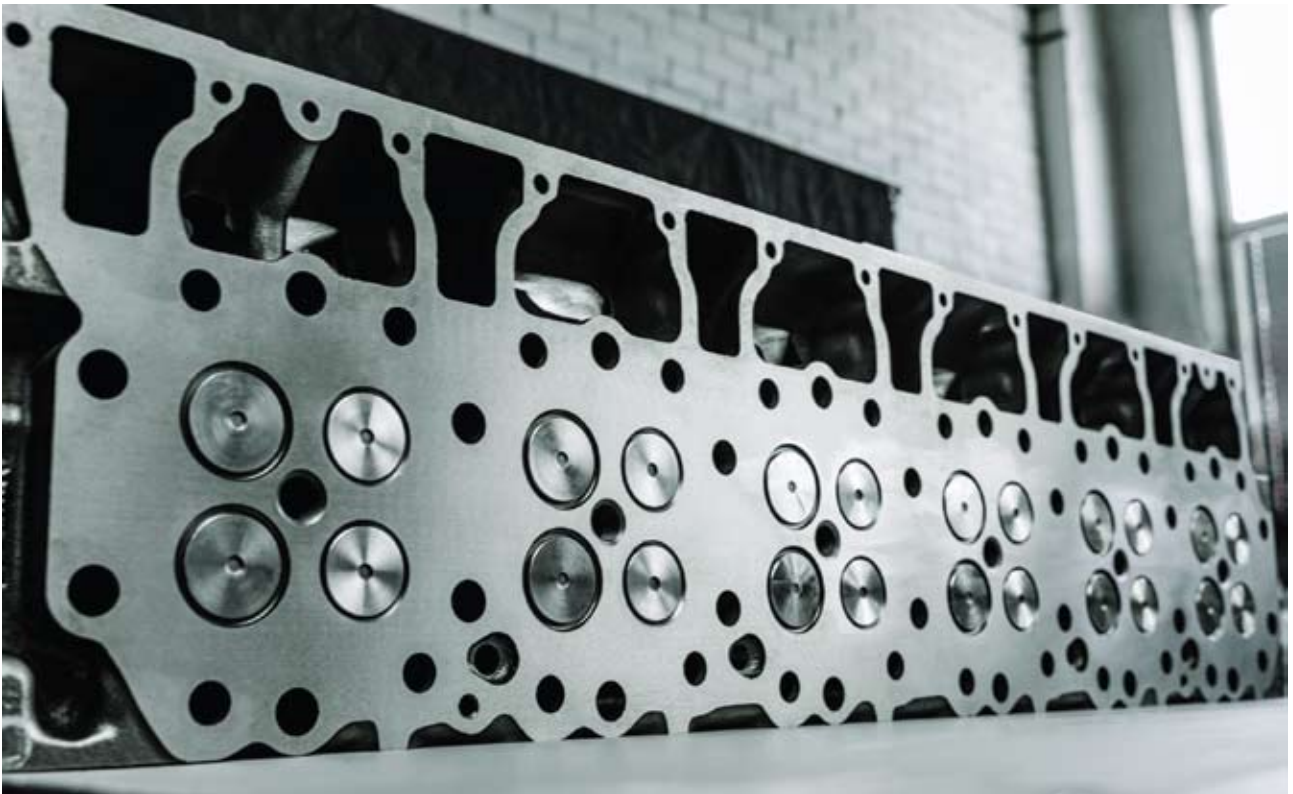
**Our Fleet Service Agreement ensures that you receive:**

- Timely service
- Transparent prices
- Solutions based on thorough fleet analysis
- Technical expertise and assistance
- Increased effectiveness due to advanced planning

With our professional support, make your vessel technical maintenance easy and assign your time for other important tasks.







## EXCHANGE BASE CONCEPT – SAVING TIME, MONEY, AND ENVIRONMENT

Ready-to-install components are fully refurbished in our workshop and can be stored or delivered to the convenient location. Old parts are returned to us for a renewal, while non-restorable equipment is responsibly recycled.

### **Simple system creates great benefits:**

- Lower costs of all components
- Highest performance level
- Inspection reports and test protocols
- Quick installation while reducing overhaul time
- Warranty

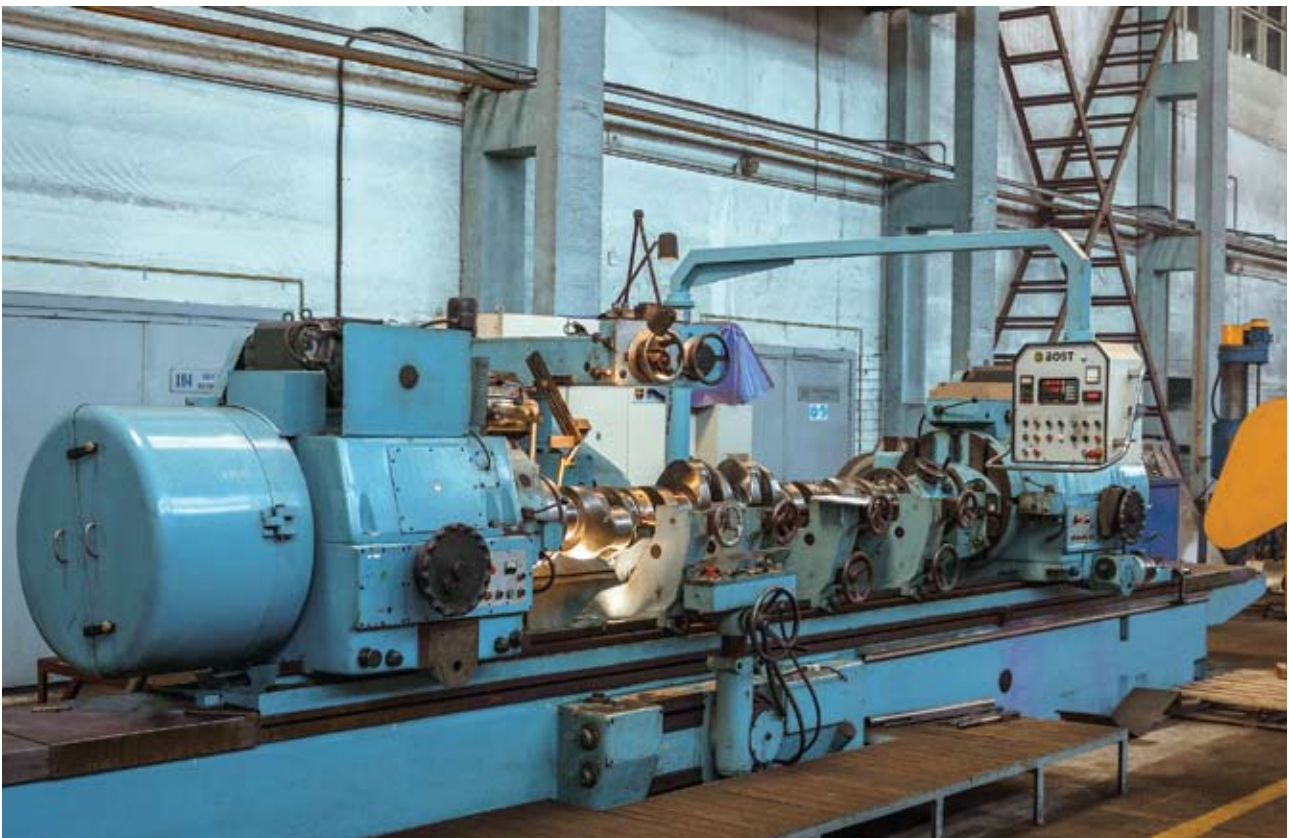
### **Equipment serviced on exchange basis includes:**

- Cylinder heads
- Connecting rods
- Piston crowns etc.
- Valve spindles
- Water and oil pumps
- Fuel pumps
- Injectors
- Turbo chargers

# WORKSHOP MACHINING & FABRICATION

**The workshop is suitable for the fabrication of special parts and various types of equipment:**

- Crankshaft grinding up to 4 m length and 1500 kg weight on site
- Grinding
- Milling
- Turning
- In-line boring
- Laser alignment tools





## OTHER EQUIPMENT REPAIR

In-house team of technicians troubleshoots and reconditions gears, hydraulic systems, and damaged shafts. The workshop is equipped with all necessary lifting and hydraulic tools to carry out quality repair works for:

- Hydraulic system components
- Cooling and refrigeration systems
- Gears
- Couplings
- Steering and rudder gears
- Rudder systems
- Deck equipment
- Pumps
- Air compressors
- Propellers
- Shaftlines
- Winches
- Davits & cranes
- Valves





## STEEL STRUCTURES – FABRICATION AND REPAIRS

Our professionals will thoroughly take care of your project, from the description to the turnkey result. We offer technical solutions for each individual case by employing innovative practices in the industry:

- Pipeline systems
- Pressure, heat resistant tanks
- Complex / One of a kind production
- Oversized, load bearing constructions
- Heat exchangers
- Various lifting equipment
- Trawl doors and fishing gear



## OTHER SERVICES

- Oxy-Fuel, plasma cutting
- Grinding
- Milling
- Polishing
- Welding of various metals (steel, stainless steel, Hardox, aluminum, CuNiFe, copper)
- Structural alignment
- Axial realignment (using laser equipment)
- 3D scanning





## WELDING

Riding squads of equipped welders carry out projects strictly in accordance with international requirements and standards. Onboard your vessel, skilled and certified welders perform complicated works in spaces with challenging areas of access.

### Class-approved welding:

- Ship hull repair
- Modernization of hull and structures
- Boiler repair
- Welding of various metals (steel, stainless steel, aluminum, CuNiFe, copper)

### Non class-approved welding:

- Industrial technological equipment repair
- Pipe fabrication, repair, and installation
- Steel constructions







## INSULATION & OUTFITTING

Professionals are ready to implement insulation engineering and outfitting solutions for marine, oil & gas or industrial needs. New or existing projects can be safely handed over to our experts for managing, starting with site supervision, design, fabrication, supply, and mounting.

**We carefully design and select thermal, cold, and sound insulation materials for:**

- Technological pipeline systems
- Tanks, boilers, and other equipment
- Any premises

**Other related services:**

- Full service of ventilation systems
- Cabin interior and internal spaces outfitting
- Fire proofing solutions and installations



# ELECTRICAL & AUTOMATION

**Qualified specialists rigorously inspect, identify faults, and carry out repair works for your electrical and automation equipment:**

- Electrical motors
- Governors
- Ship power lines and distribution systems
- Alternators
- Ship automation systems
- Bridge electronics
- Equipment control units



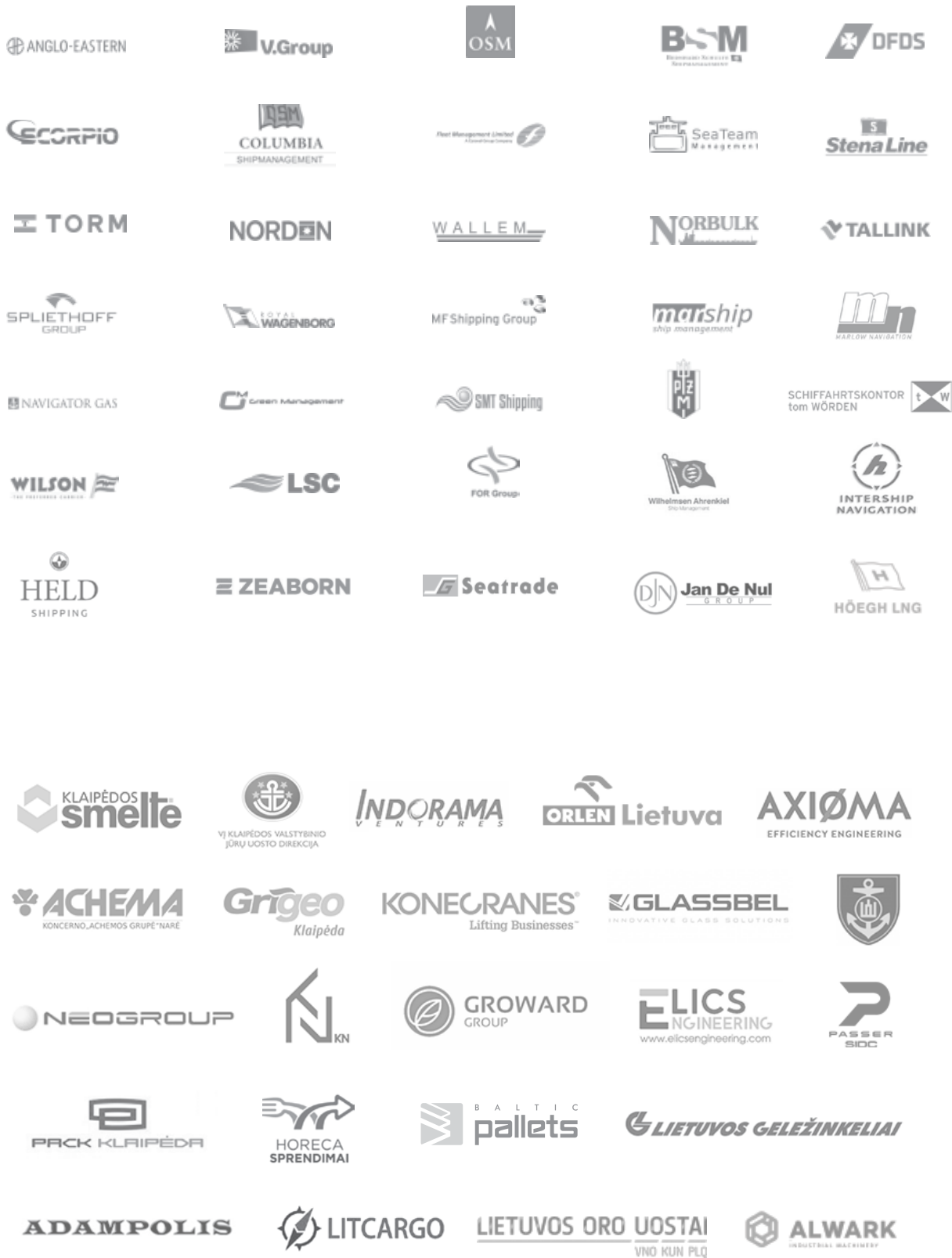
# DRYDOCKING

If your vessel is due for dry dock for whatever reason – GARANT SERVICE is ready to assist at your convenience:

- › General contracting
- › Estimation
- › Full project management and quality assurance
- › Technological solutions
- › Flexible payment terms
- › Partnership with dry docks



# CUSTOMERS THAT TRUST US:





A close-up photograph of a mechanical assembly. The central focus is a white, cylindrical component with two circular ports at the top and two at the bottom. It is mounted on a dark, metallic frame. The white component has several markings: '2323232 02' and '030 R 032 20' on the top section, and '032 20' and '2323232 02' on the bottom section. There are also two small square QR-like codes. To the right of the white component is a silver-colored metal plate with a large, stylized 'A' and the number '23-032'. The entire assembly is held together by several large, hexagonal bolts with 'M1' markings on their heads. The background is dark and industrial.

CONTACT US TO FIND OUT MORE

Dubysos St. 27A  
LT-91181 Klaipėda  
Lithuania

+370 46 340 940  
service@garant.eu  
www.garant.eu